


INDUSTRIAL

FACILITIES

MAINTENANCE SERVICES

Holistic cleaning services for interior and exterior areas of industrial facilities.
Helping our clients pass audit inspections and uphold Health and Safety.

0330 043 3174 

info@kingfisher-ss.co.uk 





Site maintenance **OVERVIEW**

Helping our clients pass audits

Our work here at Kingfisher benefits clients all over the UK from a wide variety of chemical, power and manufacturing industries. Almost all of these facilities are obligated to meet industry regulations regarding hygiene, Health and Safety and adequate maintenance.

Our industrial facilities maintenance services allow our clients to boast an outstanding quality of site maintenance. This has allowed our clients to pass facility audits with flying colours, including those relating to BRC and Food Safety audits.

Flexible services with no locked-in contracts

We offer a wide variety of site maintenance services that can be layered and combined to suit your site's specific requirements. They can be serviced on a one-off or a long term basis, and we will never lock our clients into long-term contracts if they do not need them. Our priority is always giving our clients the highest quality service for a fair and competitive price.

Delivering what you need, when you need it

Our Facilities Maintenance works cover a wide variety of cleaning needs for industrial companies, and it is this range that we believe brings convenience and efficiency for our clients.

We are very proud of the personal touch and dedicated work ethic that our team bring to each work day, turning their skills and attention to the service you need most. You can discover the full range in the brochure below; but if you're not seeing what you're looking for, get in touch and the team would be happy to help.

We are incredibly proud that our clients have received a **BRCGS audit grading score of AA+** for an unannounced audit, thanks to our Facilities Maintenance team.



University of
St Andrews



SunChemical



OUTDOOR SITE CLEANING



A myriad of exterior and outdoor site cleaning which allows your facility to pass safety audits, maintain a high level of cleanliness and adhere to industry regulations.

Quality Controlled Site Cleaning

Kingfisher are experienced in maintaining a large range of site cleaning and construction cleaning projects. From major CDM projects to one-off site cleans, we have the **specialist knowledge and experience** to ensure that any site is left safe and pristine.

We respond to **fly tipping and litter waste** across industrial sites and ensure that waste is taken to recycling and specialised waste facilities, to ensure production and day-to-day operations are not contaminated. We also clear areas with built-up debris which causes dangerous hazards around site.

Services Offered



Fly tipping



Litter picking



Road and walkway sweeping



Debris removal



Salt gritting in winter



Jet washing

EXTERIOR BUILDING CLEANING



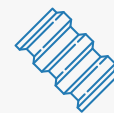
We understand that the exterior appearance of your industrial facility speaks volumes about your commitment to quality and safety. Our comprehensive exterior building cleaning services are designed to ensure your premises not only look pristine but also maintain optimal functionality.

Comprehensive cleaning covering all external buildings

Our exterior building cleaning services are tailored to remove dirt, grime, and pollutants, restoring the original lustre of your building's exterior. Clogged drains and gutters can also lead to water damage, structural issues and potential hazards if left unattended.

Using professional equipment and a skilled team of operatives, we enhance the aesthetic appeal and longevity of your exteriors while safeguarding against deterioration.

Services Offered



Cladding



Drains



Guttering



High Level Cleaning



Windows

HYGIENIC DEEP CLEANING



Our hygienic deep cleaning services are designed to thoroughly eliminate germs, bacteria, and contaminants, ensuring the highest standards of cleanliness and sanitation in every corner of your premises.

Sanitation for where you need it most

Food and beverage manufacturing sites are bustling hubs where cleanliness is paramount for food safety and employee well-being. From grease removal to disinfection, we leave no area untouched, providing you with a hygienic environment conducive to efficient food production.

Our services cover kitchen, washrooms, storage areas, production areas and WCs. This can be for more intense deep cleans if areas have been left to accumulate grime over a long time, or they can be more regular cleans to keep on top of hygiene and sanitation.

Services Offered



Kitchen Cleaning



Toilets



Washroom Cleaning



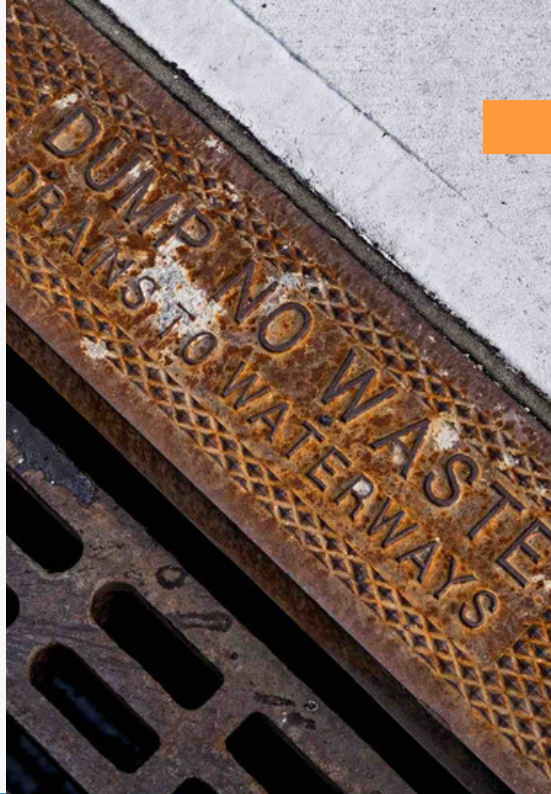
Deep Cleaning



Conveyor Belts/Packing Lines



Food Production Machinery



DRAIN CLEANING

If your site produces lots of debris or does not maintain drainage channels, blocked drains can lead to water damage and potential structural issues. Regular drain cleaning and removal can significantly reduce the chance of this.

We offer regular maintenance of site surface drains so that your drainage system can operate as normal.

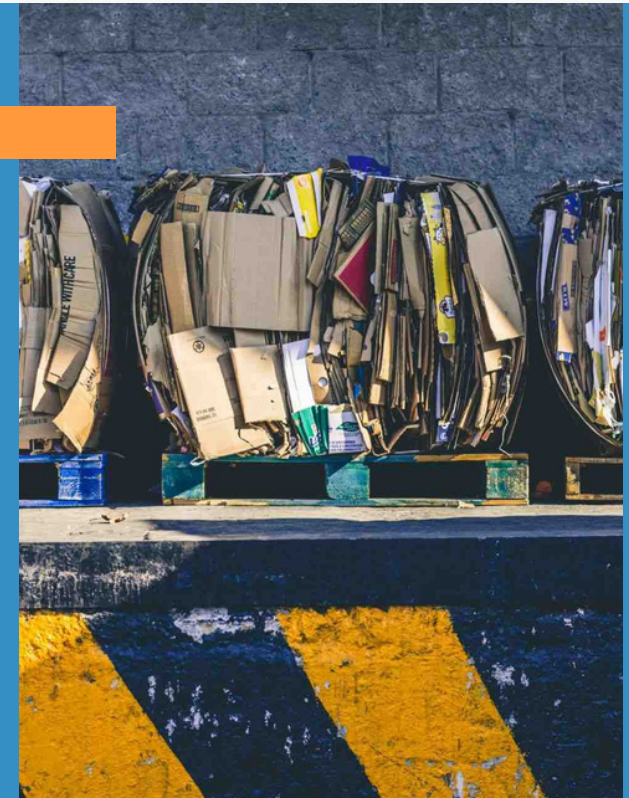
- ✓ Experienced and friendly cleaning team
- ✓ CHAS Certified
- ✓ No outsourcing - always get the personal touch

WASTE MANAGEMENT

Management of waste processes to keep site operations and production running smoothly.

We sort waste for disposal and recycling, using industrial compacters and bailers. We ensure that waste is sorted and distributed according to best practises and procedures, increasing recycling and sustainability across clients' facilities.

- ✓ Support sustainability and recycling
- ✓ Fully trained forklift operators
- ✓ Contributes to BRC safety





KINGFISHER
INDUSTRIAL SERVICES LTD.

**Get in touch with the team for a free
site survey and quote.**

To arrange your Facilities Maintenance Services, get in touch today. We can provide one-off cleans or larger, bespoke packages depending on your needs.

info@kingfisher-ss.co.uk



0330 043 3174



www.kingfisher-ss.co.uk

